

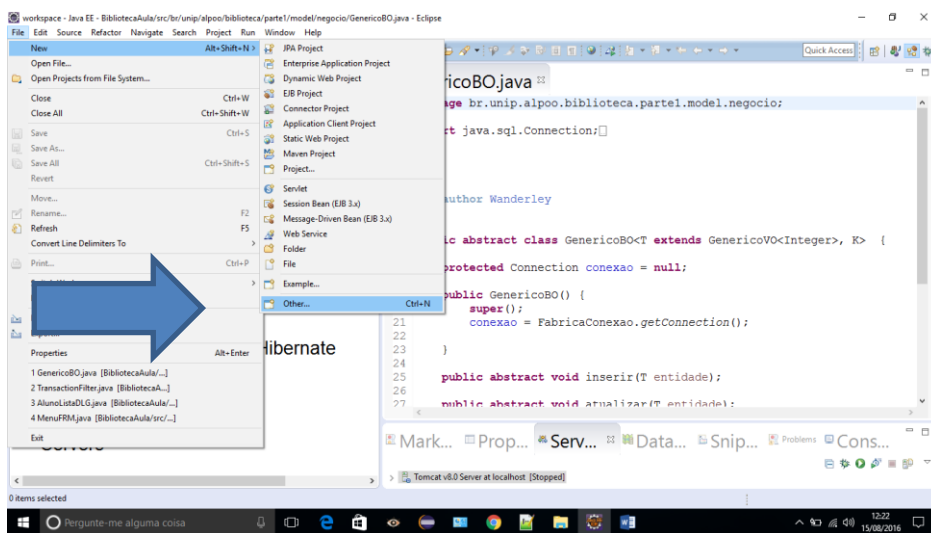
Configuração do eclipse – criar projeto biblioteca

Requisito : Para executar essa tarefa deverá executar atividade :
 APLOO - 04 - Configuração no Eclipse - Tomcat 8.0

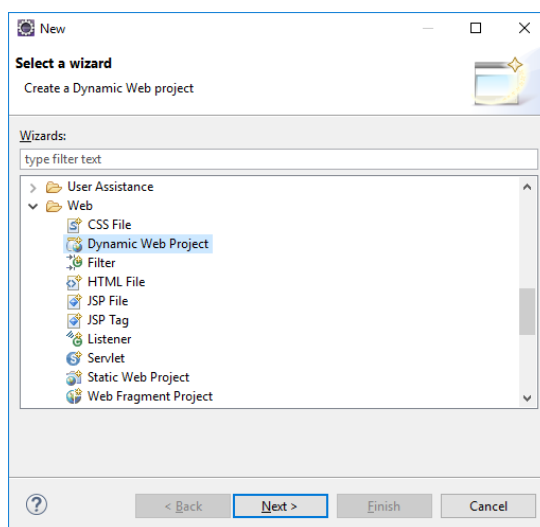
1. Criar projeto

- ❖ Por ser uma aplicação Web, criaremos um novo projeto do tipo Dynamic Web Project. Para isso, podemos clicar no menu File e em seguida New, e então escolher a opção Dynamic Web Project

1.1. - Menu principal : new\ other\



–Tela de pesquisa : digite palavra **web**. Logo depois, clique na **opção Dynamic Web projecte . depois next**



1.2. Próxima tela,

New Dynamic Web Project

Dynamic Web Project

Name cannot be empty.

Project name:

Project location

Use default location

Location:

Target runtime

Dynamic web module version

Configuration

The default configuration provides a good starting point. Additional facets can later be installed to add new functionality to the project.

EAR membership

Add project to an EAR

EAR project name:

Working sets

Add project to working sets

Working sets:

Caso esteja com opção target runtime então deverá executar APLOO - 04 - Configuração no Eclipse - Tomcat 8.0

1.3. Nessa tela - Clique na opção modifi...

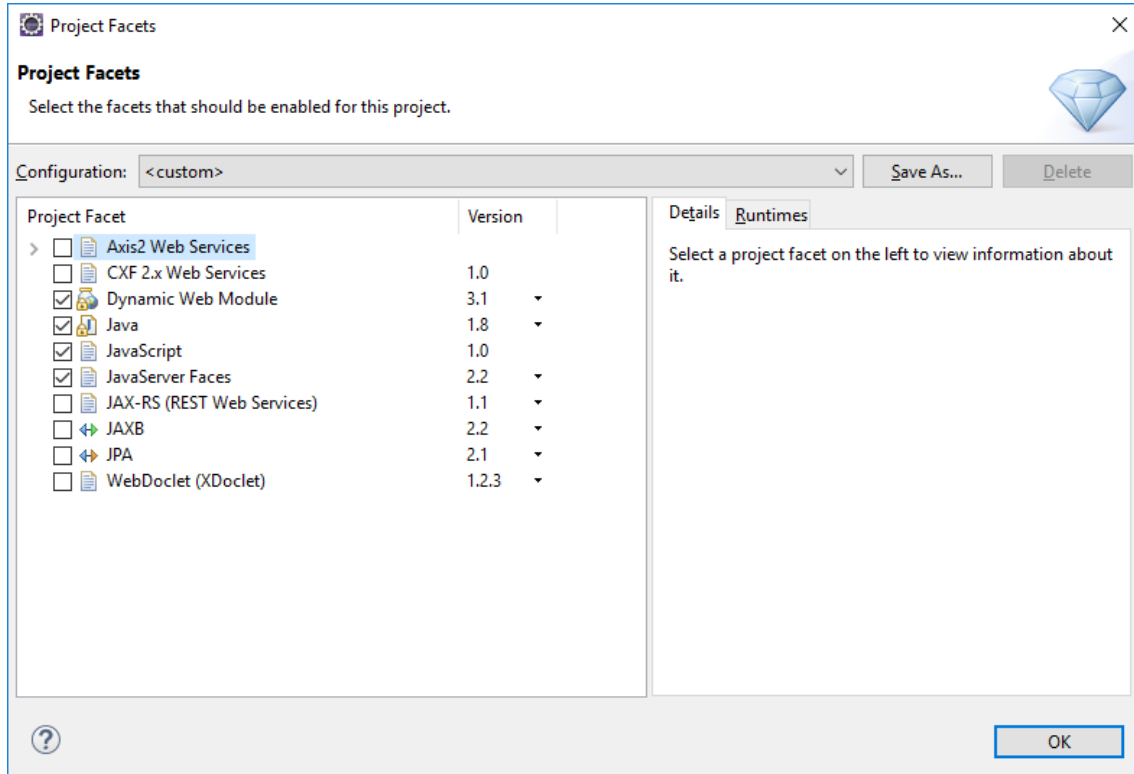
- clicar no botão Modify... na seção Configuration para podermos configurar alguns aspectos relevantes ao projeto, como por exemplo, a versão do Java e definirmos que será usado JSF.

The screenshot shows the 'New Dynamic Web Project' dialog box. The title bar reads 'New Dynamic Web Project'. The main title is 'Dynamic Web Project'. Below the title, there is a red error icon and the text 'Name cannot be empty.' The dialog is divided into several sections:

- Project name:** An empty text input field.
- Project location:** A checked checkbox for 'Use default location'. Below it, a text field shows the location 'D:\UNIP\aula\Disciplina - Aplicação Linguagem de Program' and a 'Browse...' button.
- Target runtime:** A dropdown menu showing 'Apache Tomcat v8.0' and a 'New Runtime...' button.
- Dynamic web module version:** A dropdown menu showing '3.1'.
- Configuration:** A section with a dropdown menu showing 'Default Configuration for Apache Tomcat v8.0' and a 'Modify...' button. A blue arrow points to this 'Modify...' button. Below this, there is a descriptive text: 'A good starting point for working with Apache Tomcat v8.0 runtime. Additional facets can later be installed to add new functionality to the project.'
- EAR membership:** An unchecked checkbox for 'Add project to an EAR'. Below it, a text field shows 'EAR' and a 'New Project...' button.
- Working sets:** An unchecked checkbox for 'Add project to working sets' and a 'New...' button. Below it, a text field is empty and a 'Select...' button is present.

At the bottom of the dialog, there are four buttons: '< Back', 'Next >', 'Finish', and 'Cancel'.

Selecione essas opções e depois clique em botão OK



1.4. Clique botão next

New Dynamic Web Project

Dynamic Web Project
Create a standalone Dynamic Web project or add it to a new or existing Enterprise Application.

Project name: BibliotecaAula

Project location
 Use default location
Location: C:\Users\wanderley\workspace\BibliotecaAula Browse...

Target runtime
Apache Tomcat v8.0 New Runtime...

Dynamic web module version
3.1

Configuration
<custom> Modify...
Hint: Get started quickly by selecting one of the pre-defined project configurations.

EAR membership
 Add project to an EAR
EAR project name: EAR New Project...

Working sets
 Add project to working sets New...
Working sets: Select...

? < Back Next > Finish Cancel

1.5. Nessa tela, marque opção generate web.xml

- marque a opção Generate web .xml deployment descriptor para que seja gerado automaticamente o arquivo web.xml na pasta WEB-INF do projeto.

New Dynamic Web Project

Web Module
Configure web module settings.

Context root: BibliotecaAula

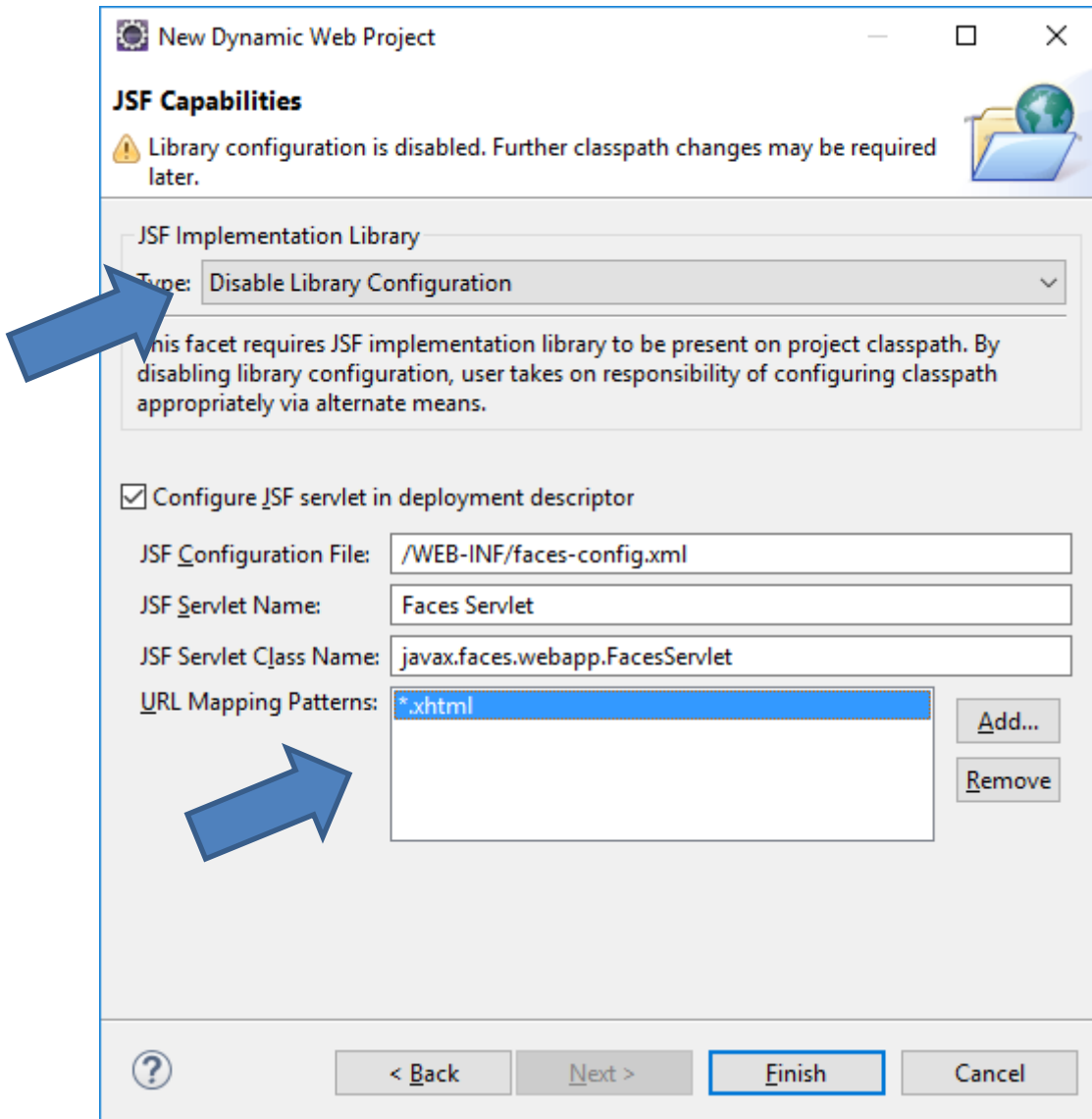
Content directory: WebContent

Generate web.xml deployment descriptor

? < Back Next > Finish Cancel

1.6. Nessa tela, seleciona as opções, conforme a tela

- Nessa etapa JSF Capabilities, a configuração deve ficar igual à configuração da Figura.



Note que na opção Disable Library Configuration informamos que os jars que contêm a implementação do JSF serão fornecidos pelo servidor de aplicação. Note também que na opção URL Mapping Patterns removemos o mapeamento /faces/* e inserimos o mapeamento *.xhtml, pois nossas páginas JSF terão extensão XHTML.

1.7. Depois de configurada essa etapa podemos finalizar, clicando em Finish.